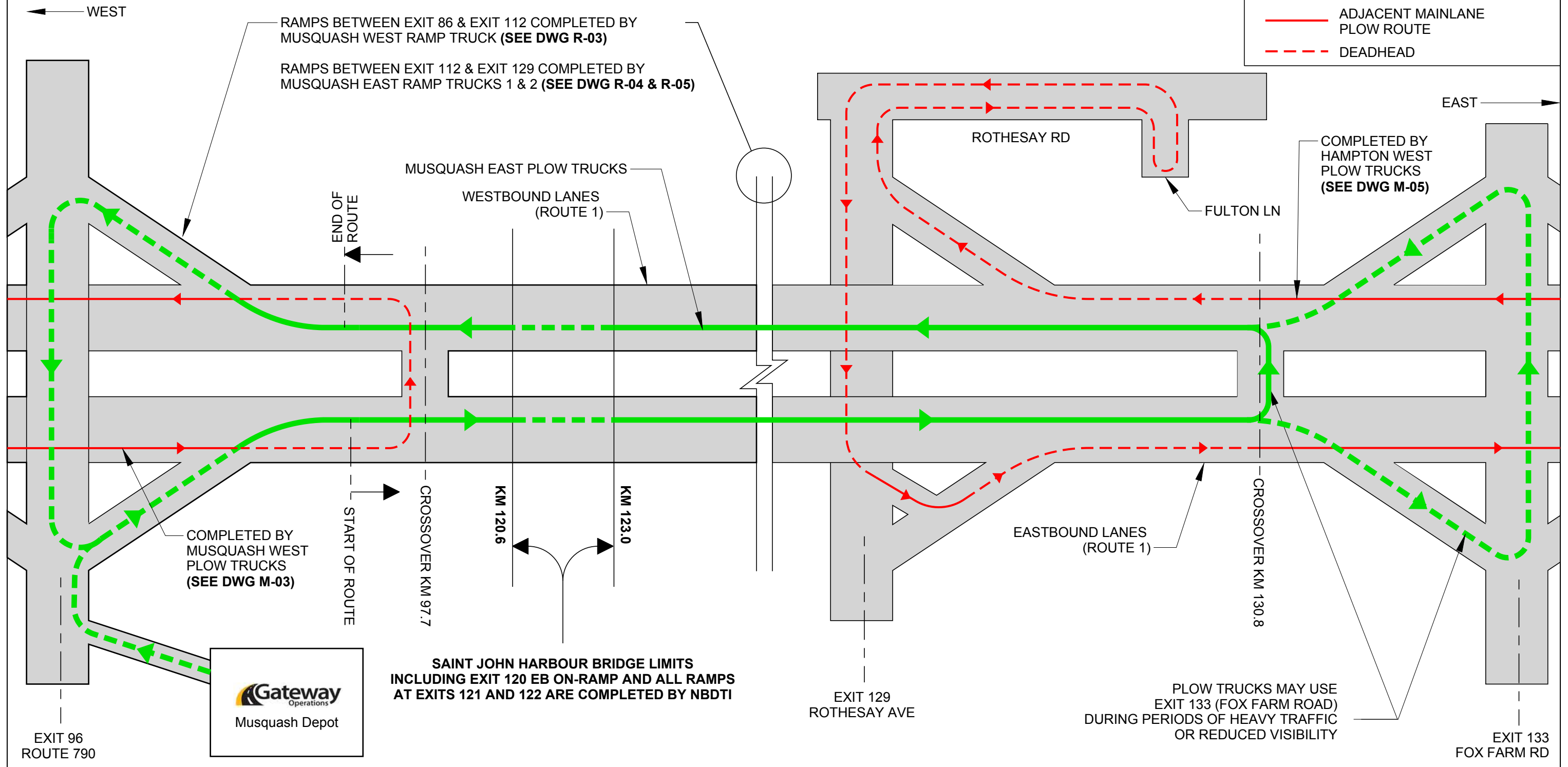


ROUTE 1 - MUSQUASH EAST - MAINLANE PLOW ROUTE

Theoretical Plow Cycle Time: 100 mins (See Notes)
 Average Theoretical Plow Operating Speed: 42 km/h

LEGEND

- PLOW DOWN
- - - DEADHEAD (TRAVEL WITH PLOW UP)
- ADJACENT MAINLANE PLOW ROUTE
- - - DEADHEAD



**SAINT JOHN HARBOUR BRIDGE LIMITS
 INCLUDING EXIT 120 EB ON-RAMP AND ALL RAMP
 AT EXITS 121 AND 122 ARE COMPLETED BY NBDTI**

PLOW TRUCKS MAY USE
 EXIT 133 (FOX FARM ROAD)
 DURING PERIODS OF HEAVY TRAFFIC
 OR REDUCED VISIBILITY

- NOTES**
- 1) During poor visibility travel speeds will be reduced resulting in increased cycle times.
 - 2) Maximum travel speed while plowing is generally 50 km/h.
 - 3) Maximum travel speed during deadhead is generally 70 km/h.
 - 4) Mainlanes completed by 2 plow trucks working in unison of each other.



MUSQUASH EAST - MAINLANE PLOW ROUTE

N.T.S.
 Not to Scale

DWG M-04